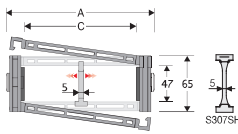


# Serie Heavy

## 307SU

### Nylon Cable Chain with opening frames

**Inner height (D) 47 mm**  
Strong double share Sideband & Frame construction with large anti-friction triple-pin. Frames opening from inner and outer radius.  
As standard the chain comes with frames every second link, on request with frames every link. Vertical and horizontal modular separator system is available.



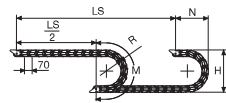
| Separator                    |                  |
|------------------------------|------------------|
| - Unassembled                | PartNo S307S     |
| - Assembled**                | PartNo S307SMCI  |
| - Unassembled                | PartNo S307SMCE  |
| <b>Strong-hold separator</b> |                  |
| for C > 250 mm               |                  |
| - Unassembled                | PartNo S307SH    |
| - Assembled**                | PartNo S307SHMCI |
| - Assembled**                | PartNo S307SHMCE |
| <b>Pin</b>                   |                  |
| - Unassembled                | PartNo PG307     |

\*\* for chain opening outer radius  
\*\*\* for chain opening inner radius

#### Technical characteristics when self-supported

|              |                     |
|--------------|---------------------|
| Speed        | 8 m/s               |
| Acceleration | 40 m/s <sup>2</sup> |

For higher requirements please consult our technical dept.



Length of chain (L)  
Half travel distance ( $\frac{LS}{2}$ )  
plus length of curve (M)

$$L = \frac{LS}{2} + M$$

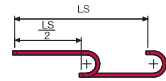
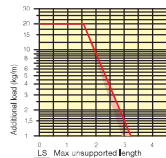
| R   | H   | N   | M   |
|-----|-----|-----|-----|
| mm  | mm  | mm  | mm  |
| 075 | 219 | 180 | 375 |
| 090 | 249 | 195 | 425 |
| 120 | 309 | 225 | 520 |
| 140 | 349 | 245 | 580 |
| 200 | 469 | 305 | 770 |
| 250 | 569 | 355 | 925 |

| A   | B  | C   | D  | R                       | Weight/m | Chain          |
|-----|----|-----|----|-------------------------|----------|----------------|
| mm  | mm | mm  | mm | mm                      | kg       | Part Number    |
| 80  | 65 | 42  | 47 | 075-090-120-140-200-250 | 1,86     | 307SU042 □□□ * |
| 91  | 65 | 53  | 47 | 075-090-120-140-200-250 | 1,86     | 307SU053 □□□ * |
| 105 | 65 | 67  | 47 | 075-090-120-140-200-250 | 1,92     | 307SU067 □□□ * |
| 111 | 65 | 73  | 47 | 075-090-120-140-200-250 | 1,94     | 307SU073 □□□ * |
| 115 | 65 | 77  | 47 | 075-090-120-140-200-250 | 1,96     | 307SU077 □□□ * |
| 125 | 65 | 87  | 47 | 075-090-120-140-200-250 | 1,97     | 307SU087 □□□ * |
| 130 | 65 | 92  | 47 | 075-090-120-140-200-250 | 1,97     | 307SU092 □□□ * |
| 137 | 65 | 99  | 47 | 075-090-120-140-200-250 | 1,99     | 307SU099 □□□ * |
| 147 | 65 | 109 | 47 | 075-090-120-140-200-250 | 2,00     | 307SU109 □□□ * |
| 155 | 65 | 117 | 47 | 075-090-120-140-200-250 | 2,05     | 307SU117 □□□ * |
| 166 | 65 | 128 | 47 | 075-090-120-140-200-250 | 2,07     | 307SU128 □□□ * |
| 180 | 65 | 142 | 47 | 075-090-120-140-200-250 | 2,10     | 307SU142 □□□ * |
| 205 | 65 | 167 | 47 | 075-090-120-140-200-250 | 2,16     | 307SU167 □□□ * |
| 230 | 65 | 192 | 47 | 075-090-120-140-200-250 | 2,23     | 307SU192 □□□ * |
| 241 | 65 | 203 | 47 | 075-090-120-140-200-250 | 2,26     | 307SU203 □□□ * |
| 255 | 65 | 217 | 47 | 075-090-120-140-200-250 | 2,30     | 307SU217 □□□ * |
| 282 | 65 | 244 | 47 | 075-090-120-140-200-250 | 2,37     | 307SU244 □□□ * |
| 291 | 65 | 253 | 47 | 075-090-120-140-200-250 | 2,39     | 307SU253 □□□ * |
| 316 | 65 | 278 | 47 | 075-090-120-140-200-250 | 2,47     | 307SU278 □□□ * |
| 342 | 65 | 304 | 47 | 075-090-120-140-200-250 | 2,56     | 307SU304 □□□ * |
| 364 | 65 | 326 | 47 | 075-090-120-140-200-250 | 2,56     | 307SU326 □□□ * |
| 392 | 65 | 354 | 47 | 075-090-120-140-200-250 | 2,63     | 307SU354 □□□ * |

\*Complete the code by inserting the value of the radius (R); Ex. 307SU117 □□□□  
Chain equipped with nylon frame every pitch: complete the code by inserting the letter D.  
Ex. 307SU117140 □

#### Self-Supporting Capacity Diagram

The maximum length of the self-supporting capacity ( $\frac{LS}{2}$ ) in relationship to the weight of the cables and hoses contained per linear metre.



The red marking in the diagram area considers the difference of weight between various widths of chains assembled with nylon frames every second pitch.

For applications with  $\frac{LS}{2}$  and weights not included in the area of the diagram showing self-supporting capacity, verify the possible use of support rollers (see page 30).

#### End Brackets

The end brackets set allows the two ends of the chain to be attached to the equipment. Set complete with tiewrap clamps available on request.

##### Nylon Type

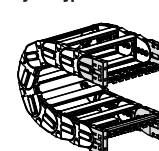


Fig. A Chain fixed frontally, inner or outer radius. (Fig A)

##### Bright Zinc Plated Steel Type\*\*\*

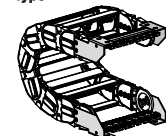
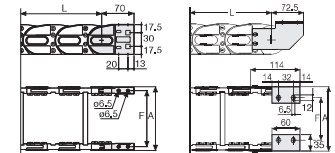


Fig. B Chain fixed outside the radius. (Fig B) See end brackets mounting variations page 31.



| Chain Type | F mm | Chain Type | F mm |
|------------|------|------------|------|
| 307SU042   | 61   | 307SU042   | 51   |
| 307SU053   | 72   | 307SU053   | 62   |
| 307SU067   | 86   | 307SU067   | 76   |
| 307SU073   | 92   | 307SU073   | 82   |
| 307SU077   | 96   | 307SU077   | 86   |
| 307SU087   | 106  | 307SU087   | 96   |
| 307SU092   | 111  | 307SU092   | 101  |
| 307SU099   | 116  | 307SU099   | 106  |
| 307SU109   | 126  | 307SU109   | 116  |
| 307SU117   | 136  | 307SU117   | 126  |
| 307SU128   | 147  | 307SU128   | 137  |
| 307SU142   | 161  | 307SU142   | 151  |
| 307SU167   | 186  | 307SU167   | 176  |
| 307SU192   | 211  | 307SU192   | 201  |
| 307SU203   | 222  | 307SU203   | 212  |
| 307SU217   | 236  | 307SU217   | 226  |
| 307SU244   | 263  | 307SU244   | 253  |
| 307SU253   | 274  | 307SU253   | 264  |
| 307SU278   | 291  | 307SU278   | 281  |
| 307SU304   | 308  | 307SU304   | 298  |
| 307SU326   | 345  | 307SU326   | 335  |
| 307SU354   | 373  | 307SU354   | 363  |

##### Nylon Type

###### Complete Set Assembled

| Chain Type | End Brackets Set |
|------------|------------------|
| 307SU...   | AN307KM          |

###### Complete Set Unassembled

| Chain Type | End Brackets Set |
|------------|------------------|
| 307SU...   | AN307K           |

###### Tiewrap Clamp

| Assembl.   | CFC307S □□□ *KM |
|------------|-----------------|
| Unassembl. | CFC307S □□□ *K  |

##### Bright Zinc Plated Steel

###### Complete Set Assembled

| Chain Type | End Brackets Set |
|------------|------------------|
| 307SU...   | A307SKM □**      |

###### Complete Set Unassembled

| Chain Type | End Brackets Set |
|------------|------------------|
| 307SU...   | A307SK □**       |

###### Tiewrap Clamp

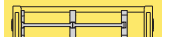
| Assembl.                            | SFCT307S □□□ *KM |
|-------------------------------------|------------------|
| Unassembl. <td>SFCT307S □□□ *K</td> | SFCT307S □□□ *K  |

\*\* Inner width (C)  
\*\*\* Pos. 1; 2=Pos.2; 3=Pos.3  
\*\*\* Available on request in stainless steel



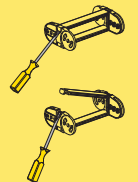
#### Serie Heavy

### 307SU Nylon Cable Chain with opening frames



Separator System To choose the separators see page 196.

How to open the cover.



Special tool to remove the connecting pivots: Part Number P2036.



For further information please consult Brevetti Stendallo's Technical Office



Version with frames mounted on every pitch.