



**BOTECO®**

**YOUR MECHANICAL COMPONENT**

## GROUP - S

### WELDING ACCESSORIES





**100%**  
MADE IN ITALY.



# S603

## SNAP-FIT SPOOL HOLDER FOR WELDING WIRE



### Materials:

(1-2) Reinforced polyamide.  
Resistant to oils and greases.

### Surface finish:

Satin.

### Colour:

Black (RAL 9011).

### Inserts:

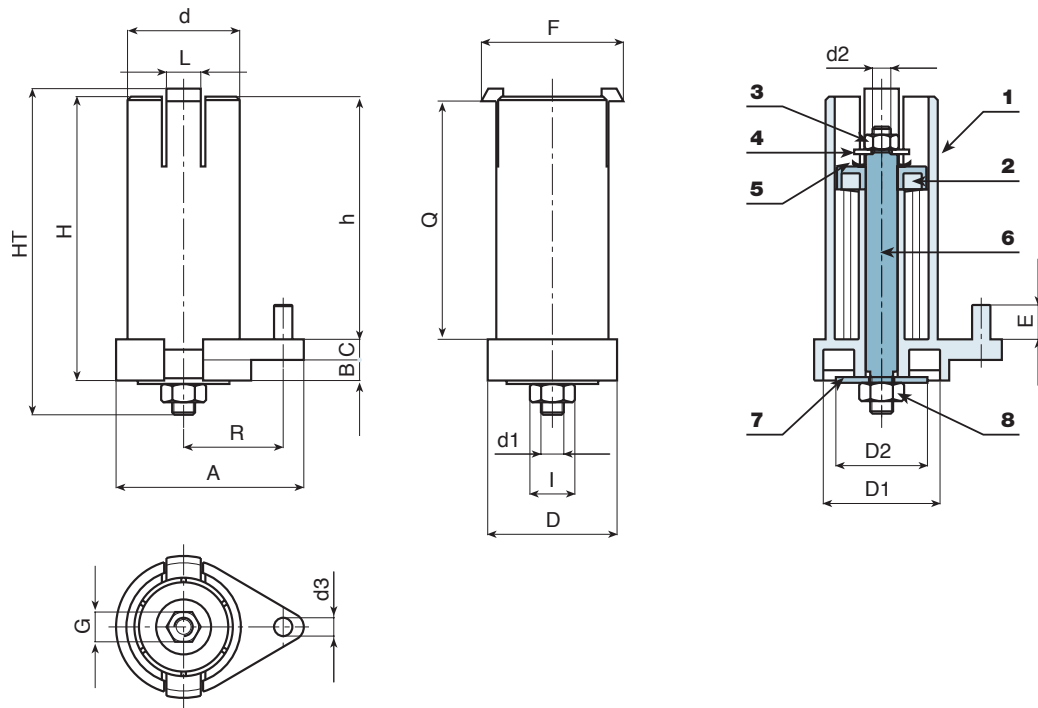
(3-8) Galvanised steel left-hand threaded nut.  
(4) Galvanised steel washer.  
(5-7) Black oxide treated steel spring washer.  
(6) Insert with galvanised steel threaded studs.

### Special Requests:

- None.

### ATTENTION:

Spool holder S603 can only be used with plastic or iron spools with internal frame diameter d. 53 mm and width 100 mm.



	art.	D	D1	D2	HT	H	d	d1	d2	d3	h	A	B	C	E	F	G	I	L	Q	R	
●	S603118.T01	60	51	40	137	118	50	M10 SX	M8 SX	8	107	82	3	9	15	63	13	17	15	104	43.5	295
●	S603124.T01	60	51	40	145	124	50	M10 SX	M8 SX	8	107	82	9	9	15	63	13	17	15	104	43.5	315



# S602TG10

## SPOOL HOLDER WITHOUT STUD FOR MIG/MAG WELDING WIRE COIL



### Materials:

(1-3-4-6) Reinforced polyamide.  
Resistant to oils and greases.

### Surface finish:

Satin.

### Colour:

Black (RAL 9011).

### Inserts:

(2) Galvanised steel spring.  
(5) Galvanised steel insert with threaded holes.  
(7) Thermoplastic TPV rubber washer, 75 Shore.  
(8) Galvanised steel washer.  
(9) Galvanised steel hexagon head screw, left-hand/right-hand thread. The choice must be made according to the motor rotation direction of the wire feeder.

### Special requests:

- For customers using spool holder S602116 who want to mount a wire coil with width Q=55, plastic adapter S604 can be provided upon request. To be ordered separately.
- Upon request, adapter S816 can be supplied for metal coils without internal frame. To be ordered separately.



S604:



S602TG10+S816



### Version for plastic coil with hole: Ø 53 mm - width 55 mm

	art.	D	HT	d	d1	d2	d3	d4	d5	h	h1	h2	h3	h4	E	Q	R	g
●	S602074.TG10X1001DX	112	102	68	50.5	28	10	M10 DX	M10 DX	9	17	8	7	1.7	13	55	44	350
●	S602074.TG10X1001SX	112	102	68	50.5	28	10	M10 DX	M10 SX	9	17	8	7	1.7	13	55	44	350

### Version for plastic coil with hole: Ø 53 mm - width 100 mm

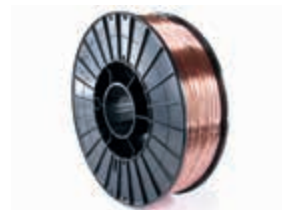
	art.	D	HT	d	d1	d2	d3	d4	d5	h	h1	h2	h3	h4	E	Q	R	g
●	S602116.TG10X1001DX	112	140	68	50.5	28	10	M10 DX	M10 DX	9	17	8	7	1.7	17	99	44	545
●	S602116.TG10X1001SX	112	140	68	50.5	28	10	M10 DX	M10 SX	9	17	8	7	1.7	17	99	44	545





# S602TG10

## SPOOL HOLDER WITHOUT STUD FOR MIG/MAG WELDING WIRE COIL



### Attention:

It is possible to mount a wire coil with width  $L=55$  on the large spool holder S602116, interposing spacer bush S604 between the coil and the fixing ring nut.

Attention: S602-116 TG10 can only be used with plastic coils with:

Internal hole:  $\varnothing 53$  mm

Width:  $\varnothing 100$  mm



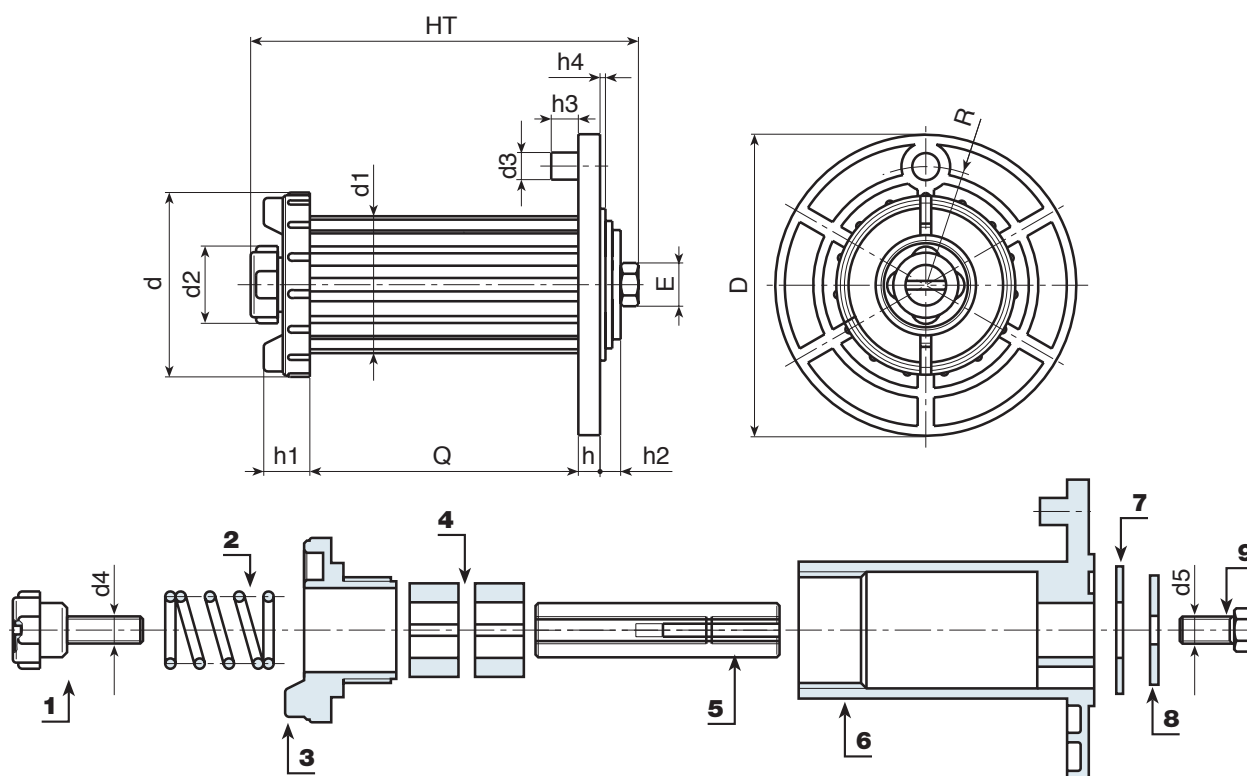
S602116 TG10 + S604



Attention: S602-74 TG10 can only be used with plastic coils with:

Internal hole:  $\varnothing 53$  mm

Width: 55 mm



# S602TG50

## SPOOL HOLDER WITH STUD FOR MIG/MAG WELDING WIRE COIL



**Materials:**  
(1-3-4-6) Reinforced polyamide.  
Resistant to oils and greases.

**Surface finish:**  
Satin.

**Colour:**  
Black (RAL 9011).

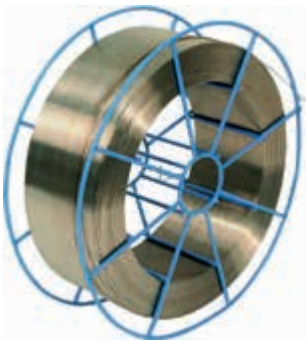
**Inserts:**  
(2) Galvanised steel spring.  
(5) Galvanised steel insert with threaded holes.  
(7) Thermoplastic TPV rubber washer, 75 Shore.  
(8) Galvanised steel washer.  
(9) Galvanised steel hexagon head screw, left-hand/right-hand thread. The choice must be made according to the motor rotation direction of the wire feeder.  
(10) Galvanized steel smooth stud.

**Special requests:**

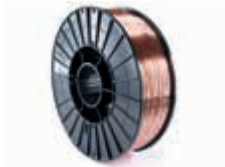
- Upon request, adapter S816 can be supplied for metal coils without internal frame. To be ordered separately.



S602TG50+S816



Attention: S602-116 TG50 can only be used with iron coils with:  
Internal hole: Ø 53 mm  
Width: Ø 100 mm



Attention: S602-116 TG50 can only be used with plastic coils with:  
Internal hole: Ø 53 mm  
Width: Ø 100 mm

Version for plastic or iron coil with FRAME and hole: Ø 53 mm - width 100 mm

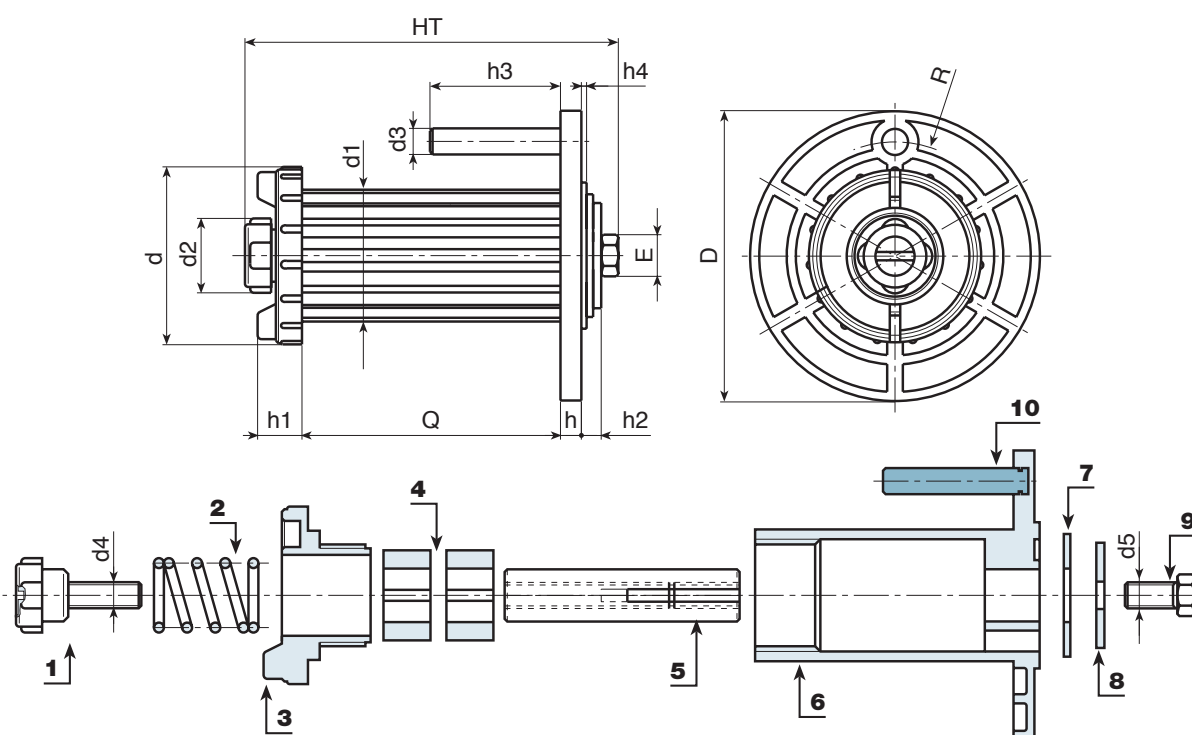
	art.	D	HT	d	d1	d2	d3	d4	d5	h	h1	h2	h3	h4	E	Q	R	
●	S602116.TG10X5001DX	112	140	68	50.5	28	10	M10 DX	M10 DX	8	17	8	50	1.7	17	99	44	550
●	S602116.TG10X5001SX	112	140	68	50.5	28	10	M10 DX	M10 SX	8	17	8	50	1.7	17	99	44	550

# S602TG50

## SPOOL HOLDER WITH STUD FOR MIG/MAG WELDING WIRE COIL



Attention:  
It is possible to use article S602TG50 with metal wire coils without frame thanks to adapter S816 (to be ordered separately).



# S816

## ADAPTER FOR METAL COILS WITHOUT INTERNAL FRAME FOR MIG/ MAG WELDERS

**Materials:**  
Reinforced polyamide.  
Resistant to oils and greases.

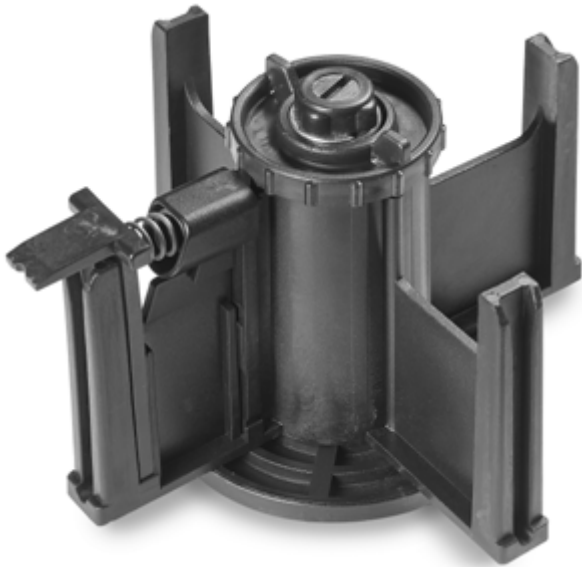
**Surface finish:**  
Satin.

**Colour:**  
Black (RAL 9011).

**Hole:**  
Smooth through hole obtained by moulding the plastic.

**Spring:**  
Galvanized steel spring for coil release safety mechanism.

**Special Requests:**  
• None.



Attention: S816 can only be used with iron coils without internal frame with:  
inner diameter: Ø 180 mm

S602TG50+S816



	art.	D	HT	D1	D2	d	d1	d2	d3	H	h	h3	A	B	C	
●	S816.T01	192	108	187	166	67	175.5	53	11.5	98	99	16	110	17.5	6.5	290



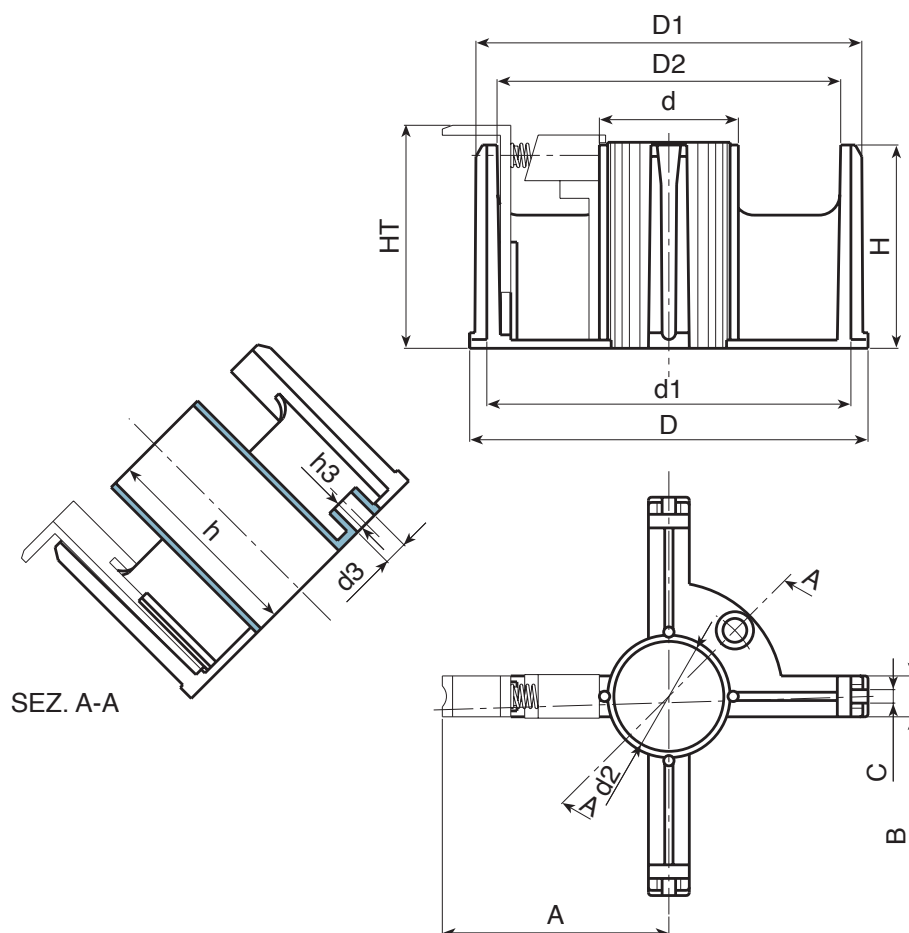
# S816

## ADAPTER FOR METAL COILS WITHOUT INTERNAL FRAME FOR MIG/ MAG WELDERS



### Attention:

Adapter S816 can only be used in combination with spool holders S602116.TG10 or S602116.TG50. Spool holders must be ordered separately, or make sure you have one. The two articles cannot be supplied assembled together.



# S802



## ROTARY SUPPORT FOR WIRE FEEDER HEAD (THREE-PHASE MIG/MAG WELDERS)

### Materials:

Reinforced polyamide.  
Resistant to oils and greases.

### Surface finish:

Satin.

### Colour:

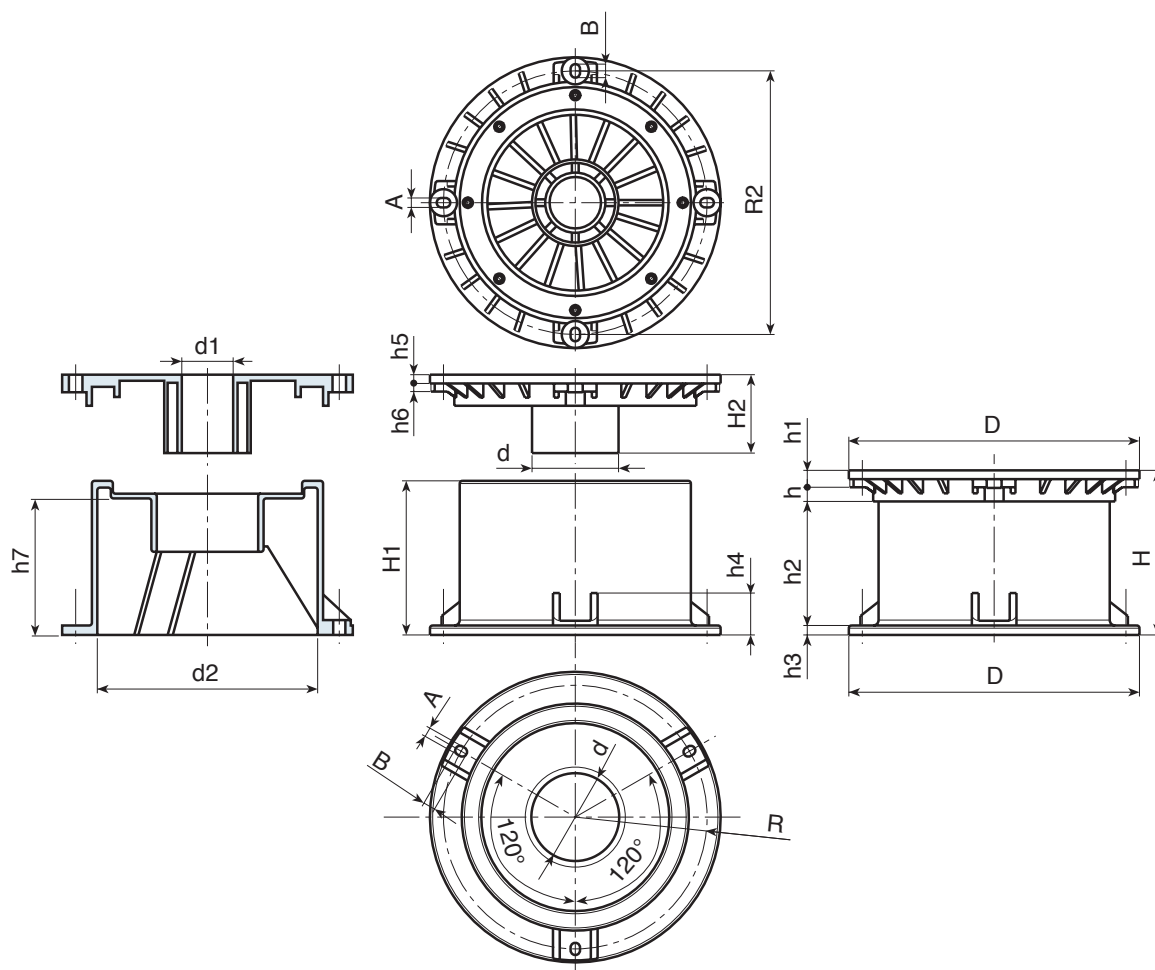
Black (RAL 9011).

### Hole:

Smooth through hole obtained by moulding the plastic.

### Special requests:

- You can order the two components separately, and their codes are:
- > Top flange: S804.T01
- > Low cylinder H=65: S800060.T01
- > Middle cylinder H=95: S800086.T01
- > High cylinder H=125: S800125.T01



	art.	D	H	H1	H2	d	d1	d2	h	h1	h2	h3	h4	h5	h6	h7	R	R1	A	B	g
●	S802065.T01	215	65	56	58	64	35	-	13	10	36	6.5	31	7	6	-	195	195	7	9	1000
●	S802095.T01	215	86	86	58	64	38	-	13	10	56	6.5	31	7	6	-	195	195	7	9	1115
●	S802125.T01	215	123	114	58	64	38	-	13	10	93	6.5	31	7	6	-	195	195	7	9	1215

# S111

## FEMALE CONNECTOR FOR WELDING MACHINE PANEL



### Materials:

Phenolic resin.  
Resistant to oils and greases.  
Resistant to high temperatures.

### Surface finish:

Glossy.

### Colour:

Black (RAL 9011).

### Inserts:

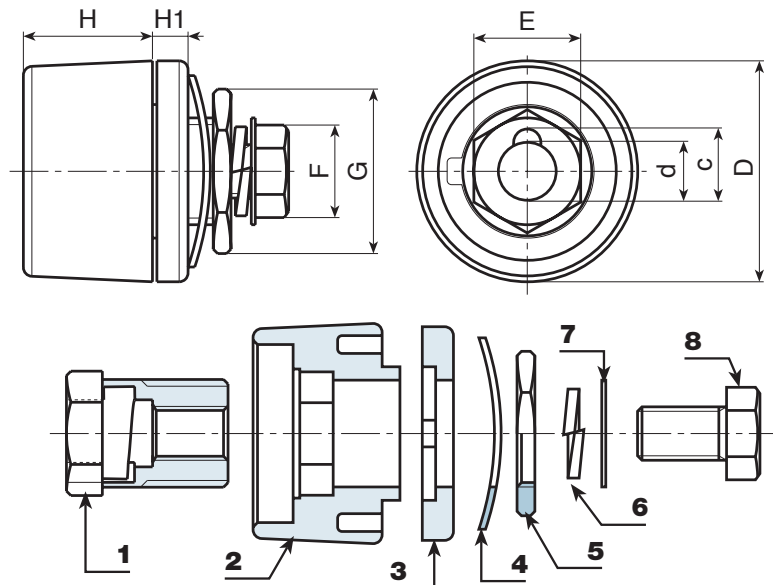
- (1) Brass insert with female connector EN 60794:12.
- (4) F25-00:  
Black-oxide treated steel toothed washer DIN 6798.
- (4) F35-00:  
Black-oxide treated steel corrugated washer DIN 137.
- (4) F70-95:  
Black-oxide treated steel corrugated washer DIN 137.
- (5) Yellow passivated steel threaded hexagon ring nut.
- (6) Black-oxide treated steel split washer UNI 1751.
- (7) Yellow passivated steel washer.
- (8) Yellow passivated hex head screw DIN933/UNI 5739.

### Special Requests:

- None.



S111+S112



	art.	D	H	H1	d	c	E	F	G	g	Amp. Max
●	S111.F2500	33	14	4	9	11	14	13	22	50	200
●	S111.F3550	50.5	29	7	13	16	21	17	27	153	400
●	S111.F7095	50.5	29	7	13	16	24	19	32	202	500

# S114

## MALE CONNECTOR FOR PANEL

+170°  
-20°

PF

UL94  
HB

RoHS  
COMPLIANT

**Materials:**  
Phenolic resin.  
Resistant to oils and greases.  
Resistant to high temperatures.

**Surface finish:**  
Glossy.

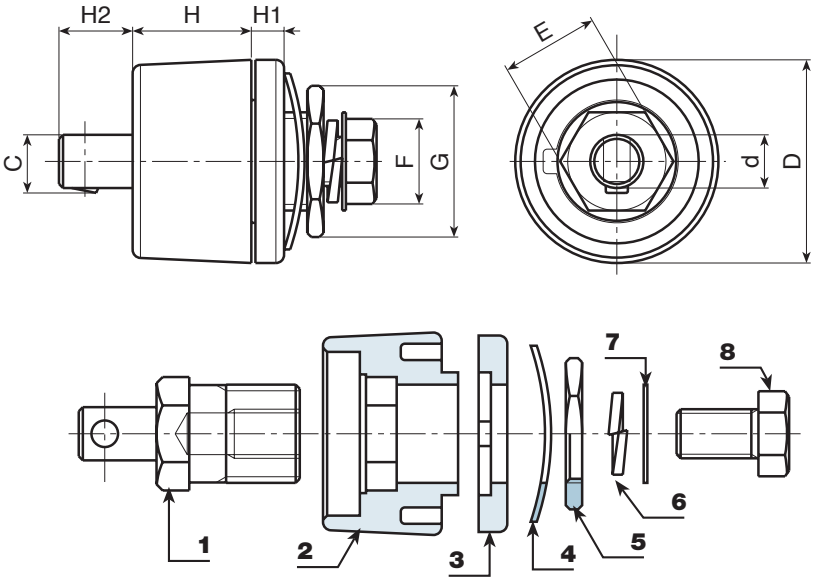
**Colour:**  
Black (RAL 9011).

**Inserts:**  
(1) Brass insert with male connector UNI.  
(4) F25-00:  
Black-oxyde treated steel toothed washer DIN 6798.  
(4) F35-00:  
Black-oxyde treated steel corrugated washer DIN 137.  
(4) F70-95:  
Black-oxyde treated steel corrugated washer DIN 137.  
(5) Yellow passivated steel threaded hexagon ring nut.  
(6) Black-oxyde treated steel split washer UNI 1751.  
(7) Yellow passivated steel washer.  
(8) Yellow passivated hex head screw DIN933/UNI 5739.

**Special Requests:**  
• None.



S114+S113



	art.	D	H	H1	H2	d	c	E	F	G	g	Amp. Max
●	S114.M2500	33	14	4	7	9	9.5	14	13	22	60	200
●	S114.M3550	50.5	29	7	9	13	14	21	17	27	194	400
●	S114.M7000	50.5	29	7	9	13	14	24	19	32	242	500





# S117

## FEMALE CONNECTOR FOR PANEL TP (SUITABLE FOR INVERTER ONLY)



### Materials:

(2-3) Reinforced polyamide.  
Resistant to oils and greases.

### Surface finish:

Satin.

### Colour:

Black (RAL 9011).

### Inserts:

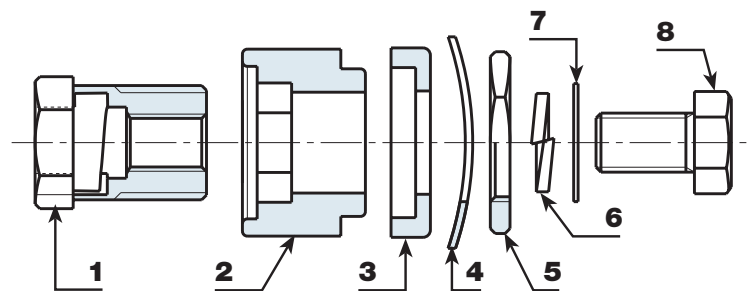
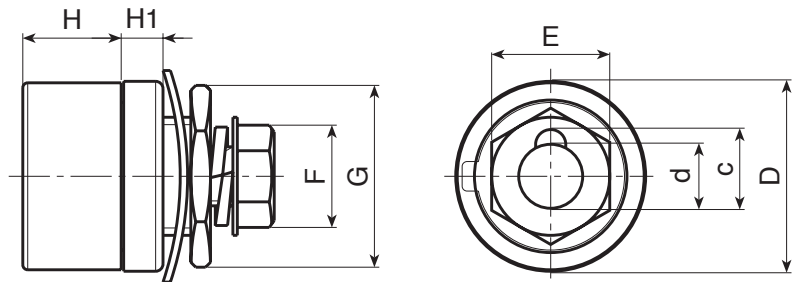
- (1) Brass insert with female connector UNI.
- (4) Black-oxide treated steel corrugated washer DIN 137.
- (5) Yellow passivated steel threaded hexagon ring nut.
- (6) Black-oxide treated steel split washer UNI 1751.
- (7) Yellow passivated steel washer.
- (8) Yellow passivated hex head screw DIN933/UNI 5739.

### Special Requests:

- None.



S117+S112



	art.	D	H	H1	d	c	E	F	G		Amp. Max
●	S117.F3550	38	20	8	13	16	21	17	27	121	200



# S118

## MALE CONNECTOR FOR PANEL TP (SUITABLE FOR INVERTER ONLY)



### Materials:

(2-3) Reinforced polyamide.  
Resistant to oils and greases.

### Surface finish:

Satin.

### Colour:

Black (RAL 9011).

### Inserts:

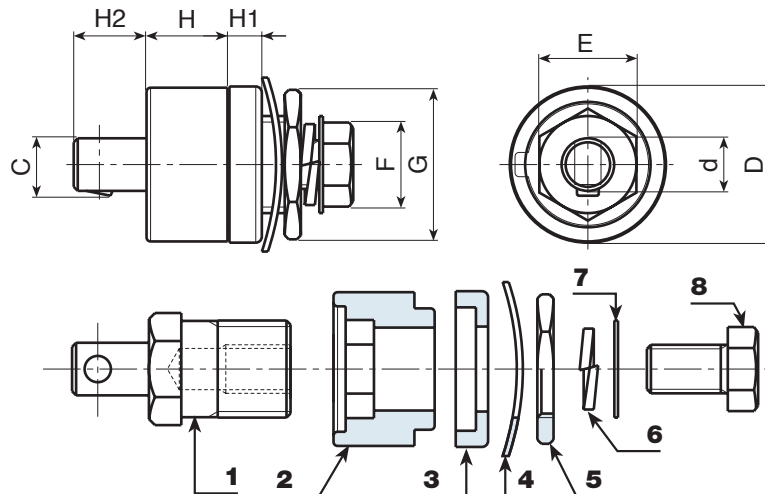
- (1) Brass insert with male connector UNI.
- (4) Black-oxyde treated steel corrugated washer DIN 137.
- (5) Yellow passivated steel threaded hexagon ring nut.
- (6) Black-oxyde treated steel split washer UNI 1751.
- (7) Yellow passivated steel washer.
- (8) Yellow passivated hex head screw DIN933/UNI 5739.

### Special Requests:

- None.



S118+S113



	art.	D	H	H1	H2	d	c	E	F	G	g	Amp. Max
●	S118.M3550	38	20	8	17	13	14	21	17	27	160	200



# S112

## MALE CABLE CONNECTOR



**Materials:**  
(4) Polypropylene and SBS rubber alloy, 75 Shore.  
Resistant to oils and greases.

**Surface finish:**  
Smooth.

**Colour:**  
Black (RAL 9011).

**Inserts:**  
(1) Brass insert with male connector EN 60794:12.  
(2) Soft copper cable collector tube.  
(3) Hexagon socket grub screw DIN 913-45H (for version M95-00 no. 2 grub screws).

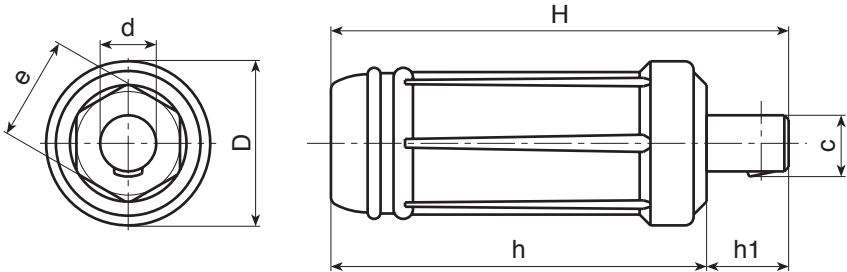
**Special Requests:**  
• None.



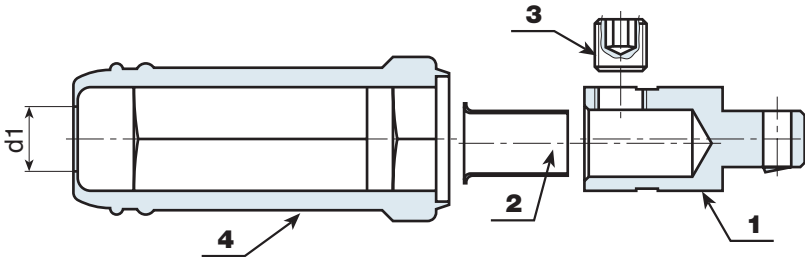
S111+S112



S112+S117



S112+S113



	art.	D	H	h	h1	d	c	e	d1	g	Amp. Max
●	S112.M2500	24.5	70	59	11	9	10	14	8.5	37	200
●	S112.M3550	35	106	87	19	13	14.5	21	11	130	250
●	S112.M7000	38	106	87	19	13	14.5	24	15.5	148	400
●	S112.M9500	38	106	87	19	13	14.5	24	15.5	200	500

# S113

## FEMALE CABLE CONNECTOR



### Materials:

(4) Polypropylene and SBS rubber alloy, 75 Shore.  
Resistant to oils and greases.

### Surface finish:

Smooth.

### Colour:

Black (RAL 9011).

### Inserts:

- (1) Brass insert with female connector EN 60794:12.
- (2) Soft copper cable collector tube.
- (3) Hexagon socket grub screw DIN 913-45H (for version F95-00 no. 2 grub screws).

### Special Requests:

- None.



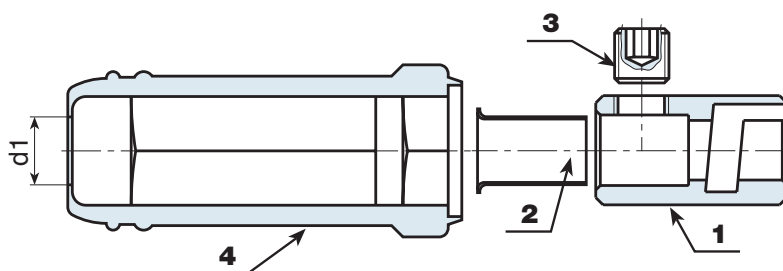
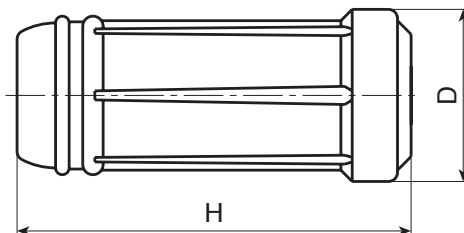
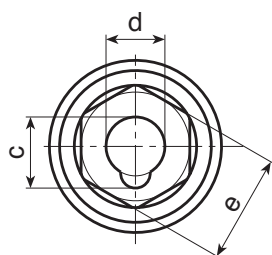
S113+S112



S113+S114



S113+S118



	art.	D	H	d	c	e	d1	g	Amp. Max
●	S113.F2500	24.5	59	9	10.5	14	8.5	38	200
●	S113.F3550	35	87	13	16	21	11	104	250
●	S113.F7000	38	87	13	16.5	24	15.5	151	400
●	S113.F9500	38	87	13	16	24	15.5	188	500



# S601:

## BUMPER CAP (FIXED BASE FOOT)



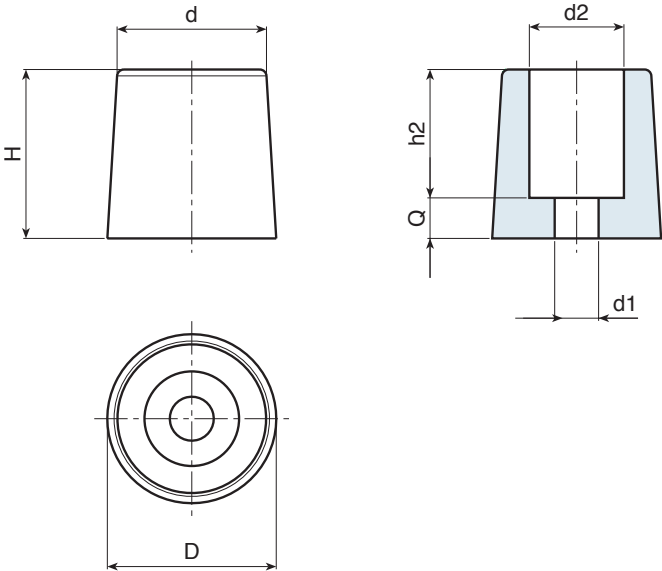
**Materials:**  
Polypropylene and TPV rubber alloy, 75 Shore.  
Resistant to oils and greases.

**Surface finish:**  
Smooth.

**Colour:**  
Black (RAL 9011).

**Hole:**  
Smooth through hole obtained by moulding the plastic.

**Special requests:**  
• None.



	art.	D	H	d	d2	h2	Q	d1	
●	S60122.E01	23	17.5	21	11	8	9.5	4	13
●	S60125.D01	25	25	22	14	19	6.5	6.5	17

# S600

## CABLE CLAMP WITH HEXAGONAL RING NUT



### Materials:

Reinforced polyamide.  
Resistant to oils and greases.

### Surface finish:

Satin.

### Colour:

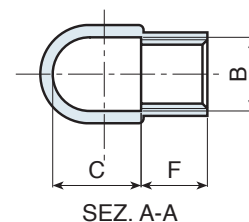
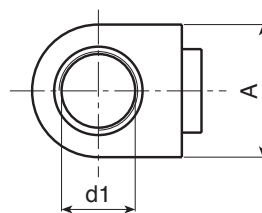
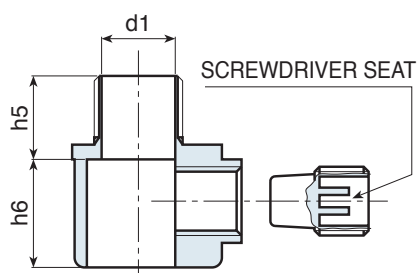
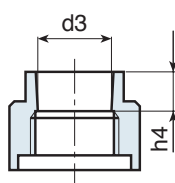
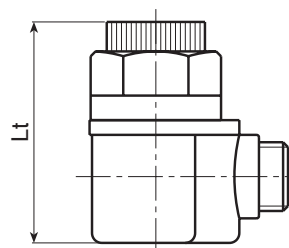
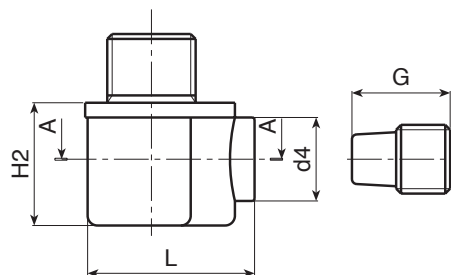
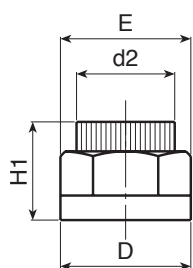
Black (RAL 9011).

### Hole:

Smooth through hole obtained by moulding the plastic.

### Special Requests:

- None.



	art.	B	C	D	E	F	G	L	H1	H2	h4	h5	h6	d1	d2	d3	d4	Lt	g
●	S60038.TG1001	M14	17.5	26	23	14.5	19	34.5	20	22	7	16.5	19	10.5	19	14	17	43	13
●	S60038.TG1101	M14	17.5	26	23	14.5	19	34.5	20	22	7	16.5	19	11.5	19	14	17	43	13
●	S60038.TG1401	M14	17.5	26	23	14.5	19	34.5	20	22	7	16.5	19	14.5	19	14	17	43	13

# S599

## PANEL CABLE CLAMP

+135°  
-30°

PA6  
+G.F.

UL94  
HB

RoHS  
COMPLIANT

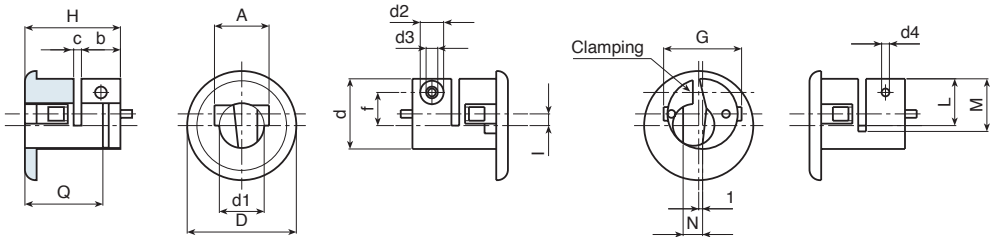
**Materials:**  
Reinforced polyamide.  
Resistant to oils and greases.

**Surface finish:**  
Satin.

**Colour:**  
Black (RAL 9011).

**Hole:**  
Smooth through hole obtained by moulding the plastic.

**Special Requests:**  
• None.



	art.	D	H	d	d1	d2	d3	d4	A	b	c	f	G	I	L	M	N	Q	g
●	S59928.T01	28	25	18	11.5	6	3	2	14	10	2	8.5	20	3	12	15	5	13	65

# S860

## TORCH CONNECTOR FRONT PROTECTION

+135°  
-30°

PA6  
+G.F.

UL94  
HB

RoHS  
COMPLIANT

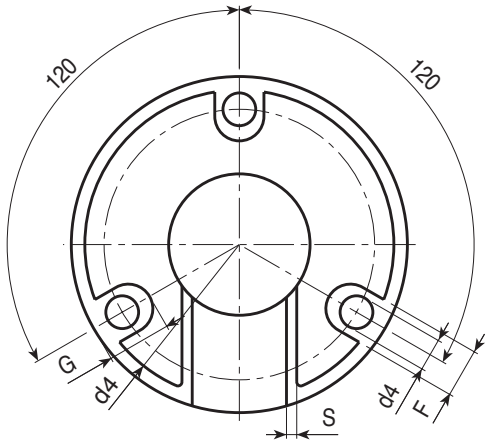
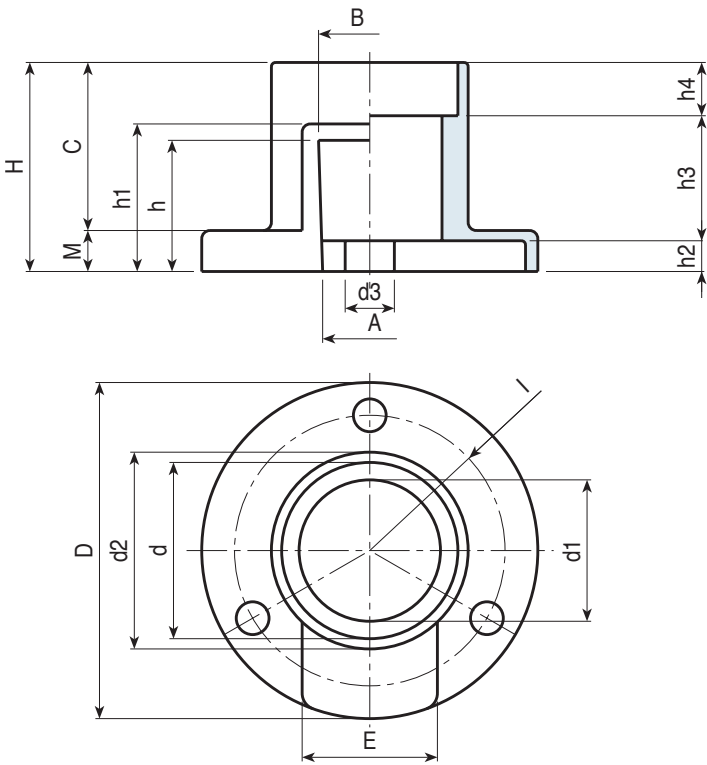
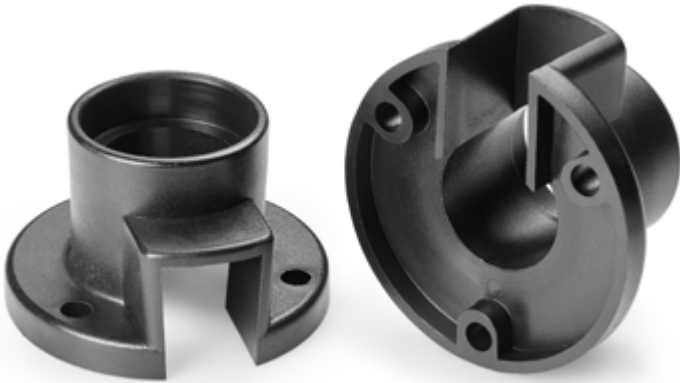
**Materials:**  
Reinforced polyamide.  
Resistant to oils and greases.

**Surface finish:**  
Satin.

**Colour:**  
Black (RAL 9011).

**Hole:**  
Smooth through hole obtained by moulding the plastic.

**Special Requests:**  
• None.



	art.	D	H	A	B	C	E	F	G	I	M	S	h	h1	h2	h3	h4	d	d1	d2	d3	d4	g
●	S860.T01	82	51	23	25	41	34.5	12	15.5	33	10	2.5	32	36	7.5	30.5	13	43	34.5	50	12	8	65





# S228

## SHORT-NECK WASHER PAIR



### Materials:

Reinforced polyamide.  
Resistant to oils and greases.

### Surface finish:

Smooth.

### Colour:

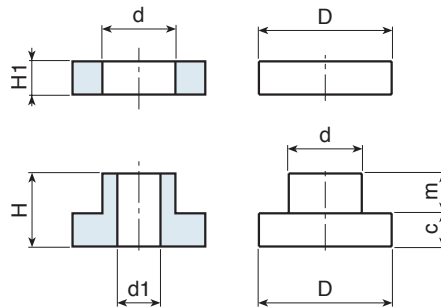
Black (RAL 9011).

### Hole:

Smooth through hole obtained by moulding the plastic.

### Special Requests:

- None.



art.	D	H	d	H1	m	c	d1	
S22820C.TG06	20	11	11	5	6.5	4.5	6.5	9

# S229

## INSULATING WASHER PAIR



### Materials:

Reinforced polyamide.  
Resistant to oils and greases.

### Surface finish:

Smooth.

### Colour:

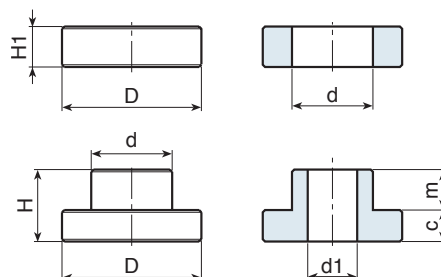
Black (RAL 9011).

### Hole:

Smooth through hole obtained by moulding the plastic.

### Special Requests:

- None.



art.	D	H	d	H1	m	c	d1	
S22931C.TG10	31	16	17.5	8.5	9	7	10.5	13



# S230

## INSULATING WASHER PAIR

+170°  
-20°

PF

UL94  
HB

RoHS  
COMPLIANT

**Materials:**  
Phenolic resin.  
Resistant to oils and greases.  
Resistant to high temperatures.

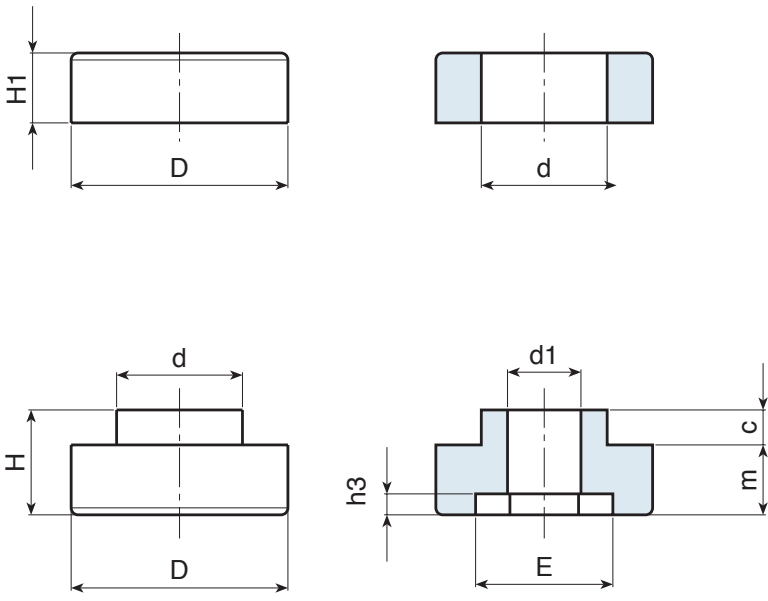
**Surface finish:**  
Glossy.

**Colour:**  
Black (RAL 9011).

**Hole:**  
Smooth through hole obtained by moulding the plastic.

**Special Requests:**

- None.



	art.	D	d	H	H1	c	m	E	h3	d1	
●	S23020C.BG06	20	11	12	5	4	8	10	3	6.5	8
●	S23031C.BG08	31	18	15	10	5	10	13	3	9	22
●	S23031C.BG10	31	18	15	10	5	10	17	3	11.5	18
●	S23031C.BG12	31	18	15	10	5	10	19	3	13	15
●	S23038C.BG14	35	22	18	10	5	12	22	5	14.5	24

# S231

## INSULATING WASHER PAIR WITH LOBED LOCKING KNOB



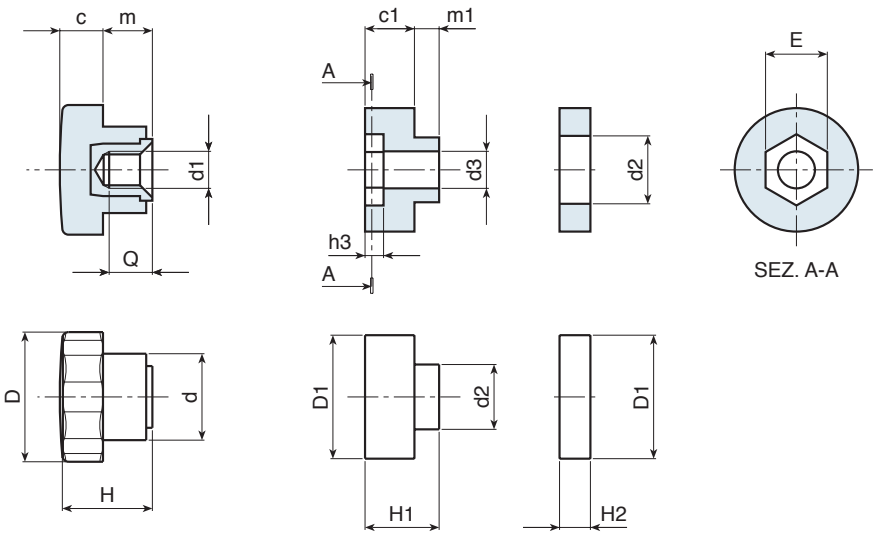
**Materials:**  
Phenolic resin.  
Resistant to oils and greases.  
Resistant to high temperatures.

**Surface finish:**  
Glossy.

**Colour:**  
Black (RAL 9011).

**Insert:**  
Brass insert with blind threaded bore, (thread tolerance 6H).

**Special Requests:**  
• None.



	art.	D	D1	d	d1	d2	d3	c	m	c1	m1	H	H1	H2	h3	E	Q	**non
●	S23120C.BM06VOL	22	20	14	M6	11	6	7	8	8	4	15	12	5	3	10	7	13

